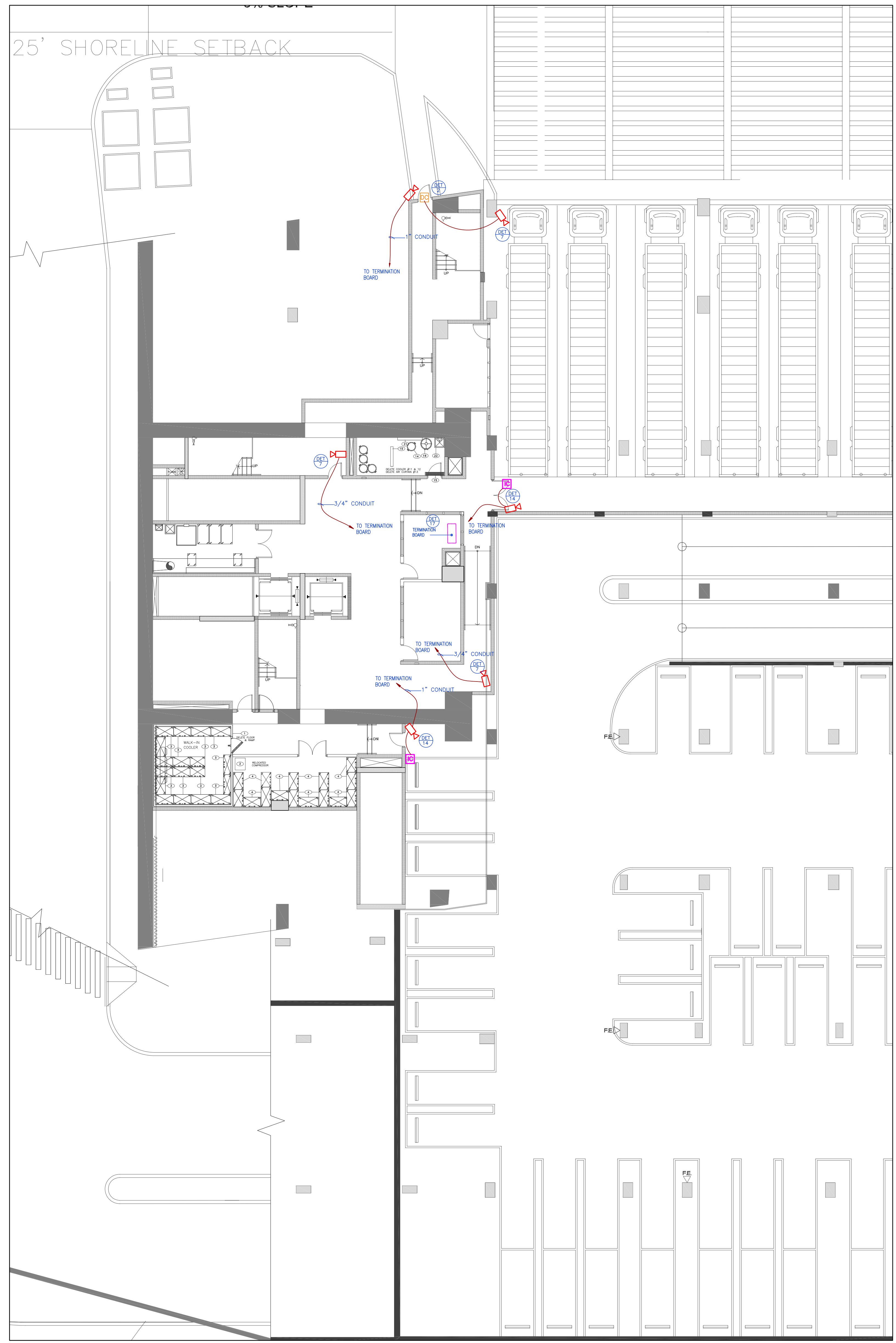


**DRAWING NOTES:**

- PER NFPA 101
1. A SENSOR SHALL BE PROVIDED ON THE EGRESS SIDE, ARRANGED TO DETECT AN OCCUPANT APPROACHING DOORS THAT ARE ARRANGED TO UNLOCK IN THE DIRECTION OF EGRESS. UPON DETECTION OF AN APPROACHING OCCUPANT OR LOSS OF POWER TO THE SENSOR.
  2. LOSS OF POWER TO THE PART OF THE ACCESS CONTROL SYSTEM THAT LOCKS THE DOORS SHALL AUTOMATICALLY UNLOCK THE DOORS IN THE DIRECTION OF EGRESS.
  3. THE DOORS SHALL BE ARRANGED TO UNLOCK IN THE DIRECTION OF EGRESS FROM A MANUAL RELEASE DEVICE LOCATED 40 IN. TO 48 IN. VERTICALLY ABOVE THE FLOOR AND WITHIN 60 IN. OF THE SECURED DOORS.
  4. THE MANUAL RELEASE DEVICE SHALL BE READILY ACCESSIBLE AND CLEARLY IDENTIFIED BY THE FOLLOWING: "PUSH TO EXIT".
  5. WHEN OPERATED, THE MANUAL RELEASE DEVICE SHALL RESOLVE IN DIRECT INTERRUPTION OF POWER TO THE LOCK INDEPENDENT OF THE ACCESS SYSTEM ELECTRONICS AND THE DOORS SHALL REMAIN UNLOCKED FOR NOT LESS THAN 30 SECONDS.
  6. ACTIVATION OF THE BUILDING FIRE PROTECTIVE SIGNALING SYSTEM SHALL AUTOMATICALLY UNLOCK THE DOORS IN THE DIRECTION OF EGRESS, AND THE DOORS SHALL REMAIN UNLOCKED UNTIL THE FIRE PROTECTIVE SIGNALING SYSTEM HAS BEEN MANUALLY RESET.
  7. ACTIVATION OF THE BUILDING AUTOMATIC SPRINKLER OF FIRE DETECTION SYSTEM SHALL AUTOMATICALLY UNLOCK THE DOORS IN THE DIRECTION OF EGRESS AND THE DOORS SHALL REMAIN UNLOCKED UNTIL THE FIRE PROTECTIVE SIGNALING SYSTEM HAS BEEN MANUALLY RESET.



**LEGEND**

	GATE RECEIVER
	CAMERA
	CARD READER
	INTERCOM
	DOOR CONTACT
	DCD BOARD

**iconbrickell**  
 Phase-III  
 495 Brickell Avenue, Miami, Florida 33131

DRAWING TYPE  
 SECURITY PLAN

SEAL

**SIS**  
 Security Innovative Solutions, Inc.  
 PHONE# (954) 358-0799  
 FAX# (954) 563-1853  
 3921 S.W. 47th Avenue, Suite 1009,  
 DAVIE, FLORIDA 33314  
 STATE CERTIFIED EF-20000832

Disclaimer: This material is the property of Security Innovative Solutions, Inc., and is loaned for review and evaluation purposes only. It is confidential in nature and shall remain the property of Security Innovative Solutions, Inc. in any form without the prior written consent of Security Innovative Solutions, Inc.

**1 TOWER 3 - LEVEL 1 FLOOR PLAN**  
 3/32"=1'-0"

DATE: 10-21-08  
 APPROVED BY: R.H.  
 SCALE:  
 DRAWN BY: S.V.  
 CHECKED BY: M.G.  
 SHEET SEC-3.1